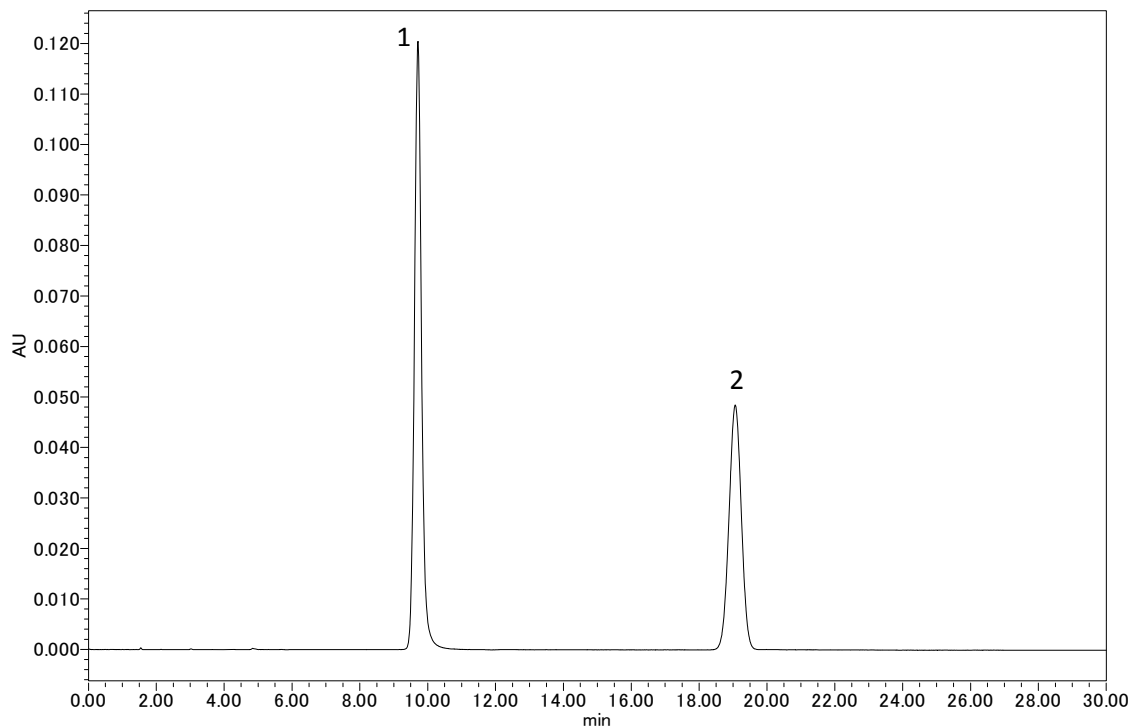


# Develosil Application Data

## No.093 JP:Metformin Hydrochloride /日本薬局方 メトホルミン塩酸塩錠 定量法



### Conditions:

Column : Develosil HSR AQ C18,5um (4.6x150mm)  
Mobile phase : Dissolve 0.8g of sodium lauryl sulfate in 620mL of diluted phosphoric acid (1→2500) and add 380mL of Acetonitrile.  
Flow rate : 1.0mL/min  
Temperature : 40°C  
Detection : UV235nm  
Sample : 1. Metformin HCl  
          2. p-Hydroxybenzoic acid iso-butyl ester  
Injection volume : 5.0uL  
System : Waters alliance

※Resolution (1.2)=**18.1** (≥6)

※RSD o the peak area ratio of 1 to 2 (%) (n=6)=**0.29** (≤1.0)

