

Analysis of Creatinine/クレアチニンの分析

Creatinine is a metabolite of creatinine phosphate and an indicator of kidney function. Develosil ANIDIUS was used for the column and the influence of organic solvent was examined.

クレアチニンはクレアチンリン酸の代謝物であり、腎機能を示す指標とされます。カラムには Develosil ANIDIUSを使用し、有機溶媒濃度の影響も検討しました。

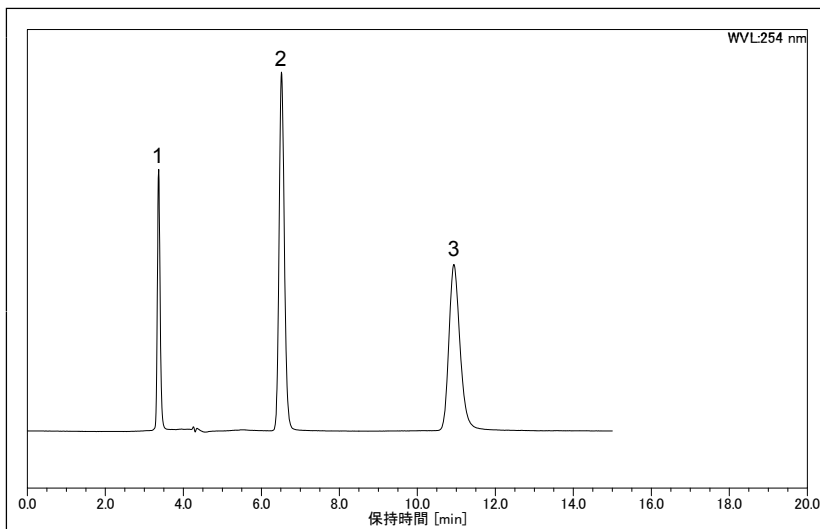


Fig.1 Analysis of Creatinine

Conditions;

Column: Develosil ANIDIUS
(4.6x150mm)

Mobile phase:

ACN/10mM HCOONH₄(pH3.0)=90/10

Flow rate: 0.5ml/min

Temperature: 30°C

Detection: UV254nm(PDA)

Sample: Naphthalene, Uracil, Creatinine

Concentration: 20ppm

Injection volume: 5uL

System: DIONEX/Ultimate 3000 Series

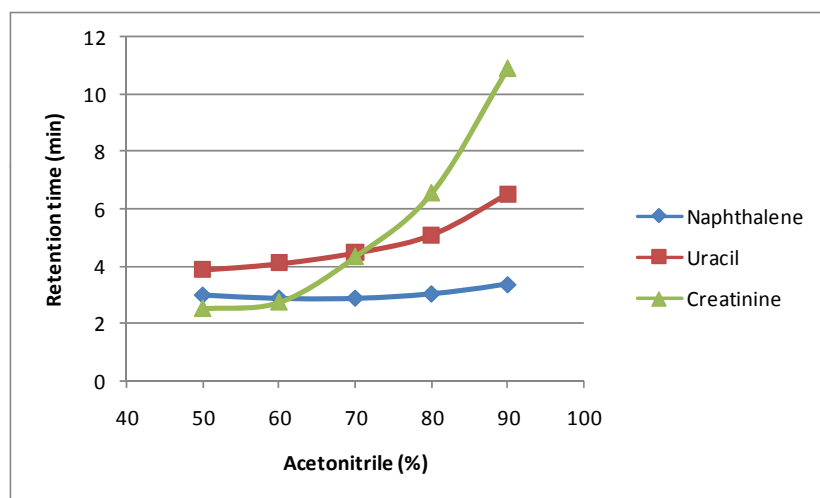


Fig.2 Effect of ACN concentration

Conditions;

Column: Develosil ANIDIUS
(4.6x150mm)

Mobile phase:

ACN/10mM HCOONH₄(pH3.0)

Flow rate: 0.5ml/min

Temperature: 30°C

Detection: UV254nm(PDA)

Sample: Naphthalene, Uracil, Creatinine

Concentration: 20ppm

Injection volume: 5uL

System: DIONEX/Ultimate 3000 Series