

Analysis of Ribivirin/リバビリンの分析

Ribivirin, in combination with inteferon, is used for treatment of chronic hepatitis C. Samples of ribivirin were analyzed using Develosil C30-UG-5 (reverse phase) and Develosil ANIDIUS (HILIC) columns.

インターフェロンとの併用によりC型慢性肝炎の治療に用いられるリバビリンの分析例を紹介します。カラムにはDevelosil C30-UG-5(逆相)とDevelosil ANIDIUS(HILIC)を使用しました。

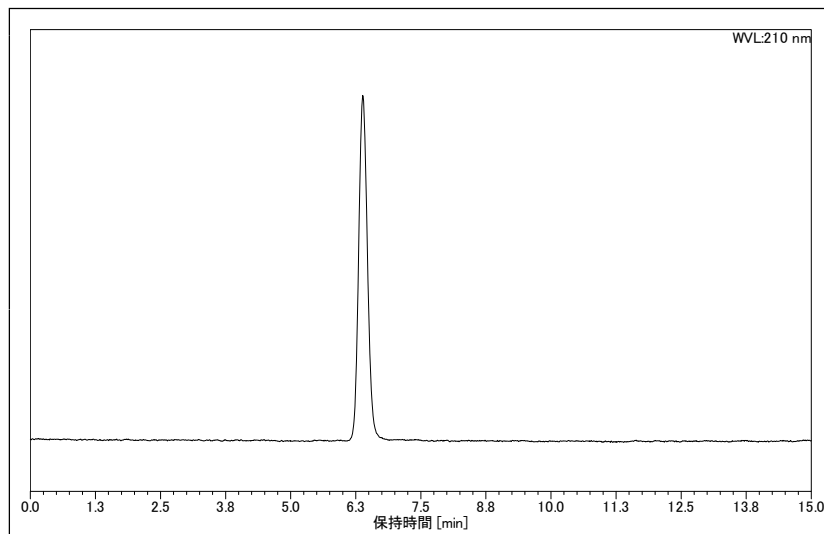


Fig.1 Analysis of Ribavirin (RPLC)

逆相用カラム使用

Conditions;

Column: Develosil C30-UG-5 (3.0x150mm)

Mobile phase:

50mM Ammonium Formate(pH6.0)

Flow rate: 0.43ml/min

Temperature: 30°C

Detection: UV210nm

Sample: Ribavirin

Concentration: 1.0mg/ml

Injection volume: 2uL

System: DIONEX/Ultimate 3000 Series

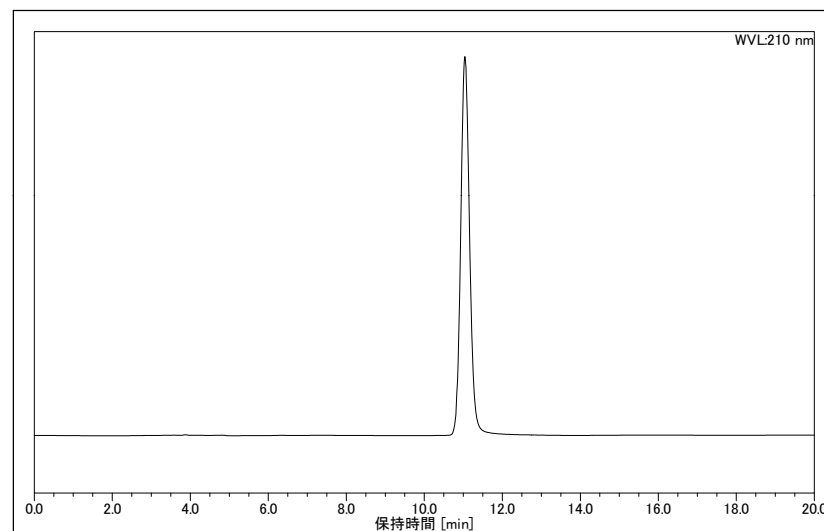


Fig.2 Analysis of Ribavirin (HILIC)

HILIC用カラム使用

Conditions;

Column: Develosil ANIDIUS (4.6x150mm)

Mobile phase: ACN/Water=90/10

Flow rate: 0.5ml/min

Temperature: 40°C

Detection: UV210nm

Sample: Ribavirin

Concentration: 1.0mg/ml

Injection volume: 2uL

System: DIONEX/Ultimate 3000 Series