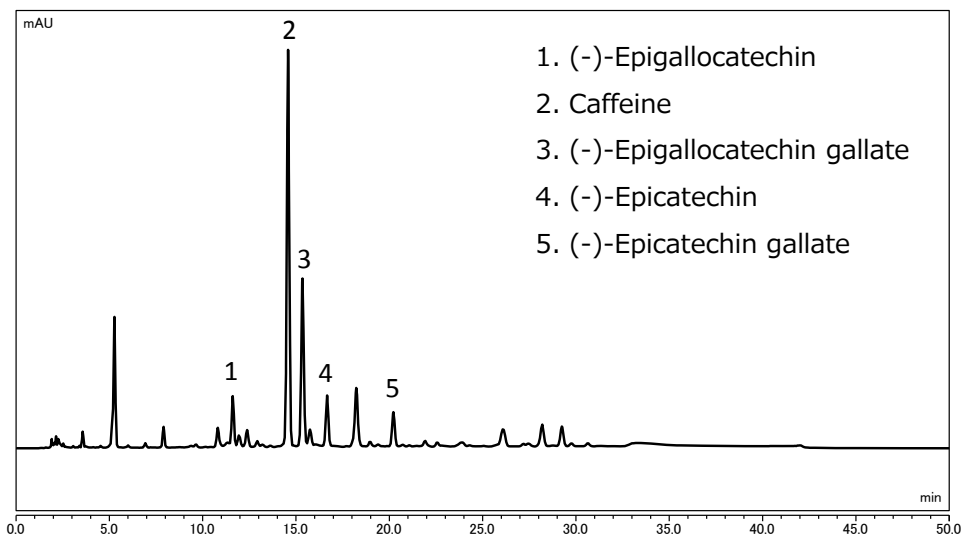


Develosil Application Data

No.102 Analysis of catechins in tea (UHPLC)

● Original method (HPLC)



HPLC Conditions:

Column: Develosil HSR AQ C18, 5um (4.6x150mm)

Mobile phase: A) 0.1% Phosphoric acid B) Methanol

Flow rate: 1.0mL/min

Temperature: 40°C (ForcedAir)

Detection: UV280nm

Sample: Japanese Tea

Injection volume: 10uL

System: Thermo Fisher SCIENTIFIC Vanquish_H

Mixer volume: 10uL

Gradient:

	A	B	Curve
0.0	90	10	5
30.0	50	50	5
40.0	50	50	5
40.1	90	10	5
50.0		End	

Preparation of samples

Japanese Tea: 6.0g

← Water: 50mL

↓
Leave overnight (24hr)

↓
Centrifugation 3,000rpm – 30min

↓
Diluted with Mobile phase
 ※MeOH/0.1% H₃PO₄=50/50 : 10-fold dilution

↓
Filtration with 0.45um GHP Membrane

↓
Injection