

column for normal phaseses



Develosil Silica 30, 60, 100

Develosil 30 and 60,100 are currently broadly used as a loading material of the column for normal phaseses.

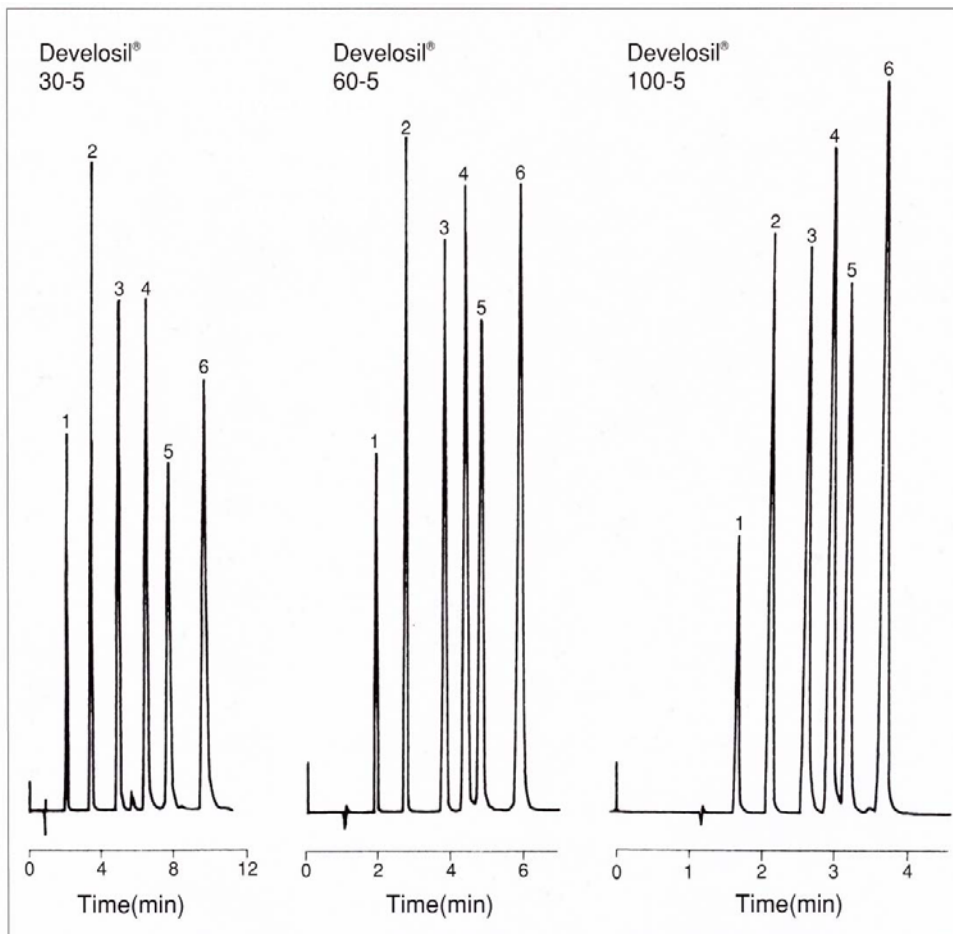
CN column, NH₂ column, and ANIDIUS can also be used as an object for normal phaseses.

The performance stable since all silica gels were produced at their company is demonstrated.

Physical properties of Develosil Silica 30,60,100

Column name	Ligand	Carbon	End Capping	Surface area	Pore diameter	Pore volume	Range of pH
Silica 30	NO	-	NO	650m ² /g	12nm	1.05mL/ g	pH2-7.5
Silica 60				500m ² /g	12nm	1.05mL/g	pH2-7.5
Silica 100				350m ² /g	12nm	1.05mL/g	pH2-7.5

Comparison of the silica stationary phase



Conditions:

Column	: Develosil® 30-5 (4.6x 150mm) Develosil® 60-5 (4.6x150mm) Develosil® 100-5 (4.6x150mm)
Mobile phase	: n-Pentane
Flow rate	: 2.0ml/min
Temperature	: 30°C
Detection	: UV254nm
Sample	: 1. Benzene 2. Naphthalene 3. Diphenyl 4. Anthracene 5. Pyrene 6. Fluoranthene

DevelosilSilica 60,100 is used in mediocre.

When it aims at a preparative, Develosil 30 with the largest area can increase feed load, and realizes efficient-ization.

Retention is adjusted to a mobile phase in a low polar solvent or an offer solvent / alcohol. Ethanol and propanol are usual at the alcohol to be used.